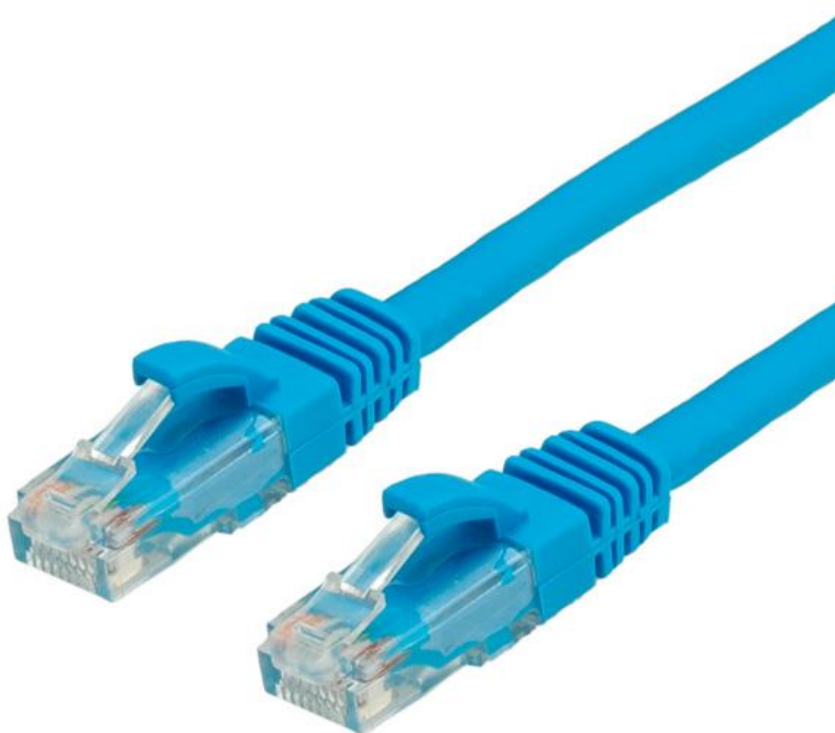




Datenblatt - Fiche technique - Data sheet

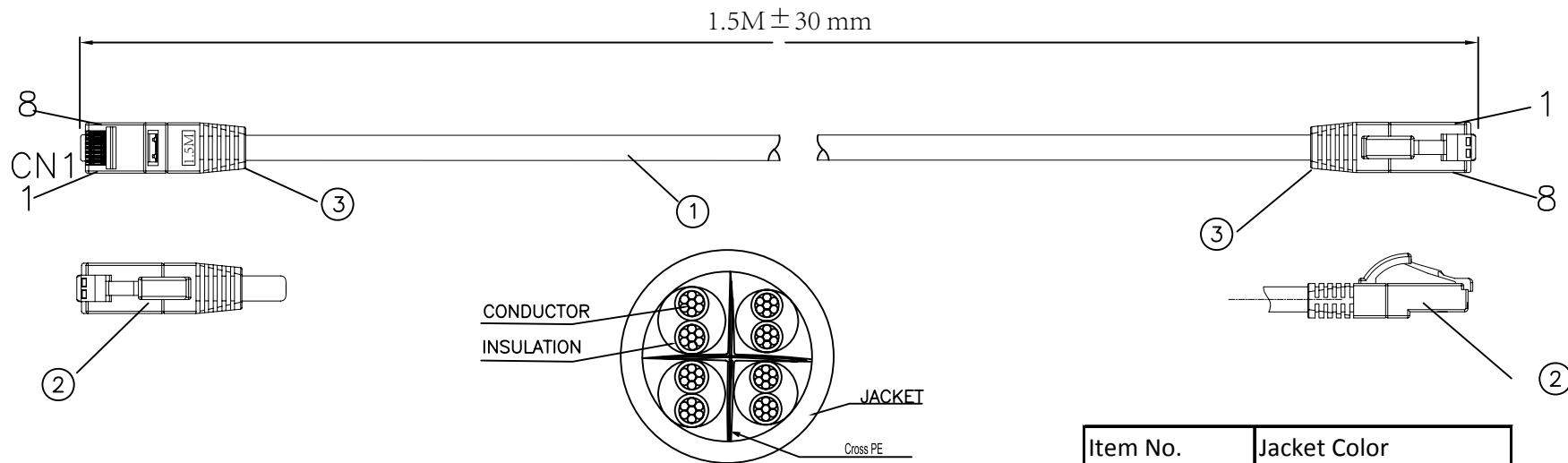
21.99.1484



VALUE UTP-Patchkabel Kat.6A, blau, 1,5 m

Cordon VALUE Cat.6A / 10 Gigabit UTP, bleu, 1,5 m

VALUE UTP Patch Cord Cat.6A, blue, 1.5 m



MATERIAL LIST:

NO.	PARTS NAME	SPECIFICATION DESCRIPTION
①	CABLE	UTP [24AWG 7*0.19±0.015mm((Bare Copper)*1PR)]*4+PVC OD:5.8±0.3mm
②	RJ45 CONNECTOR	RJ45,8P8C,TWO FORK GOLD PLATED CONTACTS
③	MOLDING	MOLDING PVC

(1)wiring:T568B

Item No.	Jacket Color
21.99.1480	Grey(RAL 7044)
21.99.1481	Red(RAL 3000)
21.99.1482	Yellow(RAL 1004)
21.99.1483	Green(RAL 6016)
21.99.1484	Blue(RAL 5019)
21.99.1485	Black(RAL 9011)
21.99.1486	White(RAL 9003)

Marking: E213738 CM (UL) C(UL) UTP PATCH CORD 24AWG 4P ISO/IEC 11801 AND TIA/EIA 568 CAT6A

ELECTRONIC TEST:

- A. OPEN/SHORT : 100%
- B. WORKING TEMPERATURES:-20~60°C
- C. Minimum Banding Radius:46MM

Item No.	21.99.1480	21.99.1481	21.99.1482	21.99.1483	21.99.1484
	21.99.1485	21.99.1486			
REMARK: NO	CHA NO	DESC	VALUE UTP Cat. 6a Patch Cord, 1.5m		
DRAWN BY	WEIHAIYAN		SECOMP		
APPROVED BY	MORGAN				
DATE	2016.07.18				