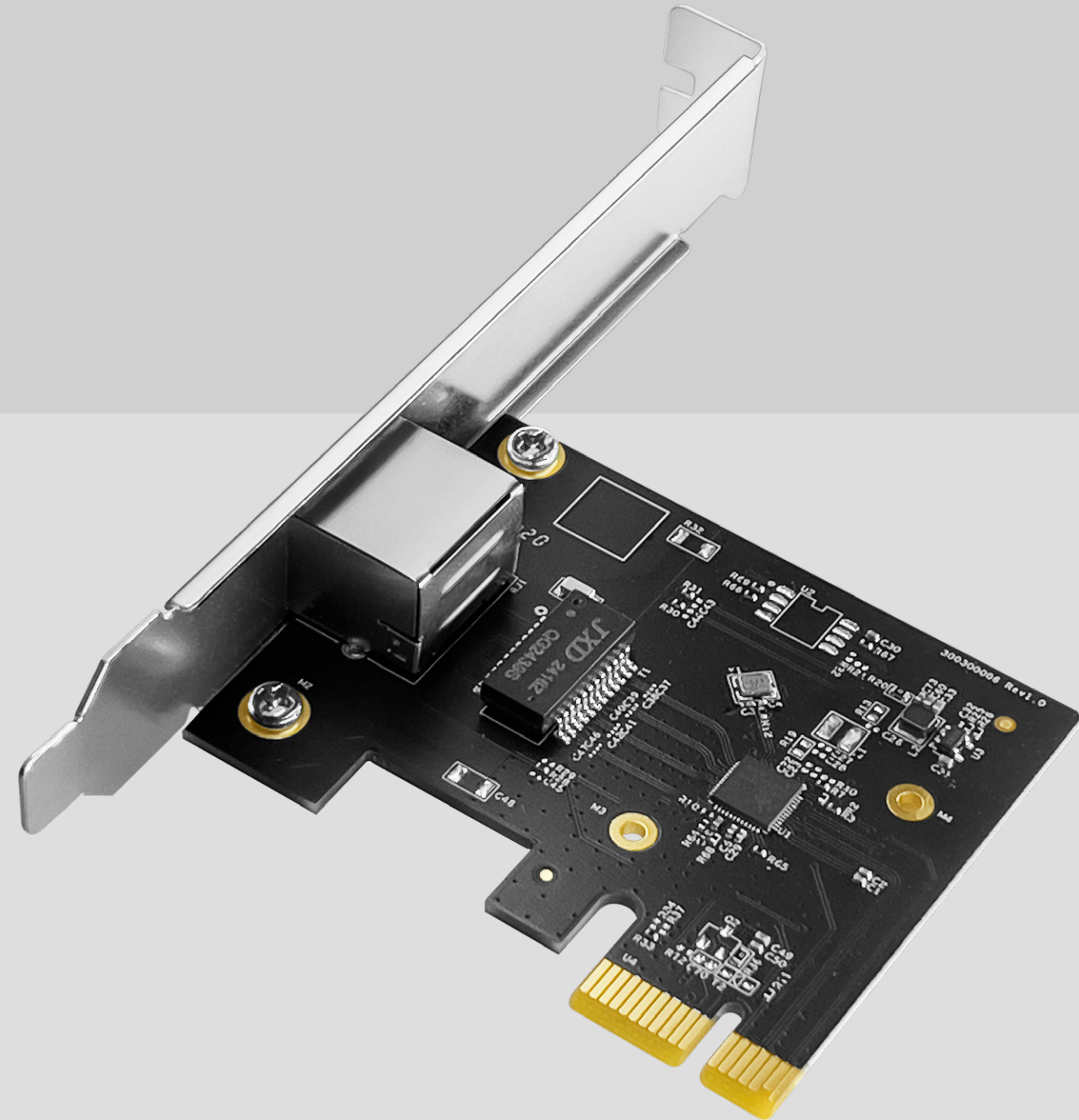




Model: PE25

2.5 Gbps PCI-E Ethernet Adapter





Highlights

A NIC for equipping your PC with 2.5G wired connectivity, featuring WoL function.

- 10/100/1000/2500 Mbps Ethernet Port
- Wake on LAN, Flow Control
- Standard/Low-Profile Bracket
- Windows, Linux, DSM 7.2+ etc
- Work on PC, Synology NAS, etc

Package Content

- PE25
- Low-Profile Bracket
- Installation Guide

Hardware Features

| | | |
|---------------------|----------------------|---------------------------------------------------------------------------------------------------|
| CPU | Chipset | RTL8125BG |
| Interfaces | 2.5G RJ45 Ports | 1 |
| | LED | Speed/Link/ACT of Ethernet Port |
| Requirements | Hardware Requirement | Requires a PCI-E 2.1 x1 or higher slot on the motherboard for powering and the Ethernet function. |
| | Compatible OS | Windows 7/8/8.1/10/11 |
| | | WindowsServer 2012~2022 |
| Driver Installation | Linux | |
| Reliability | Environment | DSM 7.2+ |
| | | Manual driver installation is required. |
| | | Driver is available from the Download Center. |
| | | Ambient Operating Temperature: 0 °C ~ 70 °C (32 °F ~ 158 °F) |
| Certifications | FCC, CE | Storage Temperature: -40 °C ~ 70 °C (-40 °F ~ 158 °F) |
| | | Humidity: 10% ~ 90% non-condensing |
| | | Storage Humidity: 5% ~ 95% non-condensing |