

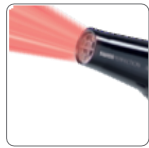
SOLIS Fast Dry 360° ionic

Type 381

This professional heavy-duty hair dryer delivers a high-pressure air flow of up to 110 km/h and is equipped with ion technology for superfast drying as well as healthy and shiny hair.



Solis



Superfast hair-drying

Dries hair 50% faster than comparable professional hair dryers resulting in shorter hair-drying sessions.



Quick drying & healthy hair

Equipped with ion technology for even quicker blow-drying as well as healthy and shiny hair.



High performance

Powerful hair dryer powered by a professional AC motor with 2'200 watts for optimal durability and performance.



Freedom of movement

The Solis 360°-Cord prevents the cable from tangling and damaging and allows for easier styling all around the head.



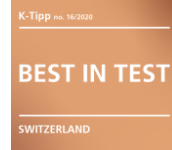
Cold shot function

The cold shot function helps to seal the hair cuticle, setting the final look for long-lasting hold, and adds shine.



Styling nozzle included

Concentrates the air flow to allow for easier styling of wavy or curly hair.



Features

- + Ergonomic handle prevents premature fatigue and ensures a safe grip for left- and right-handed use
- + Multiple speed and heat settings
- + Detachable hair filter for easy cleaning
- + Overheat protection to prevent motor from permanent damage
- + Cable length: 3 m

Specifications

Article no.:	968.25 968.26 968.27
Colour:	black silver red
Output:	2'200 W
Weight:	570 g (excl. cord)
Dimensions:	25 x 9 x 21 cm (w x d x h)
EAN:	7611210968252 7611210968269 7611210968276

So smart, so Solis.